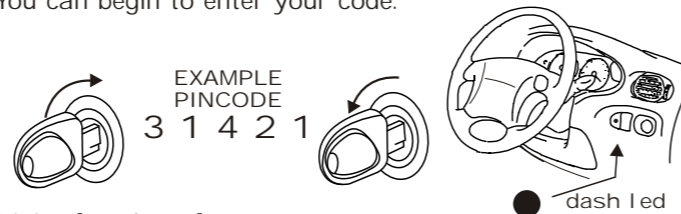


29) USING YOUR PINCODE OVERRIDE (ZX400 & 500 ONLY)

The ZX400 and ZX500 can be temporarily overridden by entering the supplied 5 digit pincode override by means of turning the ignition switch on and off in a sequence as per instructions below. If the unit is in immobiliser armed mode (dash led solid) you can begin to enter your code. If the alarm is set, open the door and turn the ignition on. Wait for the unit to stop sounding, turn the ignition off. You can begin to enter your code.

Digit 1 [number 3]

Turn ignition key on, led will start to flash, on the **THIRD** flash, turn ignition key off, the indicators will flash once, you have now successfully put your first digit in.

Digit 2 [number 1]

Turn ignition key on, led will start to flash, after the **FIRST** flash, turn ignition key off, the indicators will flash once, you have now successfully put your second digit in.

Digit 3 [number 4]

Turn ignition key on, led will start to flash, after the **FOURTH** flash, turn ignition key off, the indicators will flash once, you have now successfully put your third digit in.

Digit 4 [number 2]

Turn ignition key on, led will start to flash, after the **SECOND** flash, turn ignition key off, the indicators will flash once, you have now successfully put your fourth digit in.

Digit 5 [number 1]

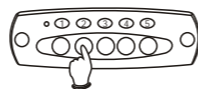
Turn ignition key on, led will start to flash, after the **FIRST** flash, turn ignition key off, the indicators will flash once, you have now successfully put your fifth digit in and have successful overridden your vehicle.

If you enter an incorrect digit the unit will not flash the indicators and will revert back to the first digit. If you enter an incorrect digit 3 times the unit will sound the alarm. Turn the ignition on and wait for the unit to stop sounding. You can now re-enter your code.

30) ANTI KEY THEFT KEYPAD *

The optional anti key theft keypad protects the vehicle against theft in the event of key theft or driver mugging. A personal pin code has to be entered into the keypad before the vehicle can be driven. The unit will come default with code 1111.

RESETTING THE IMMOBILISER :



Reset the alarm via your remote control (unlock button), the alarm dash led will be flashing rapidly. Turn the ignition on and enter your 4 digit code, the keypad led

will turn on for 5 seconds, the unit will reset the immobiliser, the alarm dash led will turn off, the vehicle can now be driven. You can also enter your code before turning the ignition on however once you have entered your code you then have 5 seconds to turn the ignition on in order for the immobiliser to be reset so the vehicle can be driven.

KEYPAD NUMBERS AND BUTTONS :

When you press any button the unit will beep and the numbers will light up for 10 seconds. If a door is opened the keypad numbers will light up.

INCORRECT CODE :

If an incorrect code is entered the unit will sound a rapid beep to warn you that the wrong code was entered. You have 4 attempts to enter your correct code, after the 4th attempt the unit will lock up for 10 minutes. The unit will beep and flash the numbers for a 10 minute period to warn you that the keypad has locked up. During this time you will be unable to reset your immobiliser.

CHANGING YOUR 4 DIGIT CODE :

Press button 1 and 5 simultaneously until the unit sounds a long beep.

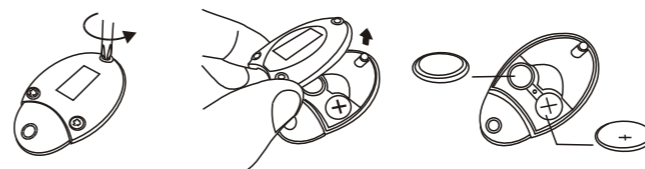
A) Enter your current 4 digit code, if the correct code is entered the unit will sound a long beep and enter change code mode. The keypad led will turn on solid. (If incorrect code is entered the unit will exit change code mode and revert back to normal operation).

B) Enter your new 4 digit code, after the 4th digit is entered the unit will sound a long beep.

C) Enter your new 4 digit code again as confirmation. If the 1st code matches the 2nd code, the new code will be saved, if they don't match the new code will not be saved and the current code will remain.

31) REMOTE LOW BATTERY WARNING

The remote led will normally be on solid when pressing any button. If the remote batteries are low the led on your remote control will flash. Replace the batteries with: 2 x CR1220 lithium batteries.



USER INSTRUCTIONS



SANTI INTELLICA

Pro Series

Alarm and Immobiliser Systems
ZX300 ZX400 ZX500

Alarm and Immobiliser Systems
ZX300 ZX400 ZX500

FITMENT CENTRE STAMP:

SANJI SECURITY SYSTEMS (PTY) LTD
106 16TH ST MIDRAND
GAUTENG, SOUTH AFRICA
TEL +27 11 266 7500
FAX +27 11 266 7501
E Mail : sales@sanji.co.za
http://www.sanji.co.za



SANTI
INTELLICA

Briefed with the idea of "The Super intelligent Design Concept" Sanji engineers developed the ZX Range of professional vehicle security alarm and immobiliser systems. The ZX range represents the 'state of the art' in vehicle security. Read these instructions for correct system operation. All points marked * are optional features. Refer to the back of the leaflet to find out which product you have.

1) **SETTING THE ALARM**



To enable the immobiliser and full alarm features. Press the lock button, the unit will sound 2 soft chirps and the indicators will flash twice. If fitted with central locking the doors will lock and the sensor will switch on.

2) **DOOR / BOOT / BONNET OPEN WARNING**



To warn the driver that a door or boot is open when setting the alarm. The unit will sound two additional loud chirps and flash the indicators twice when setting the alarm. If a door is still open when the unit fully arms, the doors will be bypassed. The system will assume a faulty door switch.

3) **ALARM DELAY PERIOD**



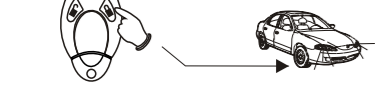
25 second arming delay. The dash led will flash rapidly during the 25 second delay period. After the delay, the dash led will start to flash slowly. The alarm and immobiliser is now fully armed.

4) **ALARM FAST ARM**



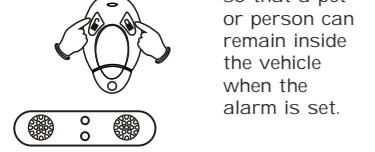
To skip the 25 second delay period. After the alarm has been set press the lock button again. The unit will now go to fully armed and the dash led will flash slowly.

5) **ALARM ARMED CONFIRMATION**



To confirm alarm armed mode. Press the lock button, the indicators will flash once to confirm that the alarm is fully set.

6) **SENSOR SHUT DOWN**



To disable the interior sensor so that a pet or person can remain inside the vehicle when the alarm is set. Press both buttons together when setting the alarm. The siren will sound 4 loud chirps and the indicators will flash twice. The sensor has now been disabled (green LED will turn off). After 25 seconds the system will be fully armed.

7) **RESETTING THE ALARM**



To reset the immobiliser and alarm. Press the unlock button. The unit will sound 1 soft chirp and the indicators will flash once. If fitted with central locking the doors will unlock.

8) **SELECTIVE UNLOCK ON ALARM RESET**



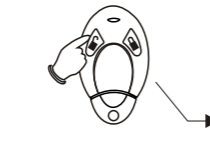
To reset the alarm and open the driver's door only. Press the unlock button. The unit will reset and selectively only open the driver's door. To open the passenger doors press the unlock button again.

9) **AUTO ZONE BYPASS**



Auto-matically bypass a defective zone. If the unit detects a permanently faulty zone, e.g. door or sensor during alarm set, the system will sound 3 times then isolate the faulty zone.

10) **VIOLATION CHIRPS**



To indicate to user that the alarm has triggered in his/her absence. When the alarm is reset, the unit will sound 4 loud chirps if the alarm had triggered during the alarm set mode.

IGNOR POINTS 11 & 12 FOR AN ALARM ONLY PRODUCT

11) **STARTING THE VEHICLE**



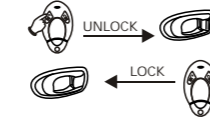
To start the vehicle after the alarm has been reset. When the alarm is reset the dash led will be off, the vehicle can be started within 60 seconds. After 60 seconds the immobiliser will be armed, dash led on. Press the unlock button the dash led will turn off, the vehicle can now be started.

12) **DOOR LOCK ON START**



Automatic locking of all doors when ignition is turned on. When the ignition is turned on, if all the doors, boot and bonnet are closed, the doors will lock.

13) **DOOR LOCK / UNLOCK IN DRIVE**



To lock or unlock the doors from the remote while the car is running. Press the unlock button to unlock the doors. Press the lock button to lock the doors.

14) **DOOR UNLOCK ON IGNITION OFF**



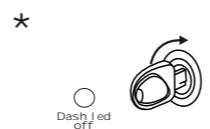
To open the doors when the ignition is turned off. Switch the ignition off. All the doors will unlock. If fitted with selective unlock, only the driver's door will open. Press the unlock button to open the passenger doors.

15) **REMOTE PANIC**



To enable the siren to sound and the indicators to flash under emergency conditions. Press either button continuously for +/- 3 seconds. When in panic, the unit can be driven. Press the unlock button to reset panic.

16) **HI-JACK SERVICE MODE**



To temporarily disable hi-jack. In drive, (ignition on, dash led off), press the lock and unlock buttons simultaneously, the siren will chirp once. Hi-jack is now disabled. When the ignition is turned on to drive, the unit will flash the indicators once to warn the user that the unit is in hi-jack service mode. To reactivate hi-jack repeat the above procedure, the siren will chirp twice.

17) **FORCED HI-JACK MODE**



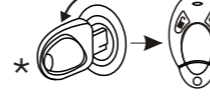
Forced hi-jack in drive. When you start the vehicle, the unit will enter hi-jack, the dash led will give a 1 second pulse. Refer to point 21 to reset hi-jack. If you start the vehicle with the hidden button pressed, the unit will not enter forced hi-jack.

18) **DRIVER'S DOOR HI-JACK**



To activate hi-jack. In drive open then close driver's door. If all doors, bonnet and boot are closed the dash led will give a 1 second pulse. The unit has entered hi-jack phase.

19) **HI-JACK OPERATION**



Hi-jack mode. Countdown period is 90 sec. If ignition is turned off during this time, the timer will stop. When the ignition is turned on again the timer will continue. If you try to set the alarm during the countdown period, the unit will sound 4 loud chirps to warn you that you are in hi-jack mode.

20) **HI-JACK WARNING PERIOD**



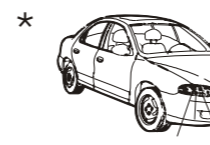
Hi-jack warning mode. After the countdown period the unit will enter the 20second warning period. The unit will chirp and flash the indicators. After this period the unit will enter the 8 second slow down period. At any point in time you can reset hi-jack by pressing the hidden button.

21) **RESETTING HI-JACK**



To reset the unit back to normal drive mode. Press the hidden push button at any time for +/- 2 seconds, the unit will chirp once to confirm that hi-jack has been reset.

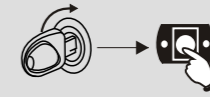
22) **FINAL HI-JACK**



To confirm what phase the unit is in. In final hi-jack the siren will sound on and off at 5 second intervals and the indicators will flash. The immobiliser will be armed. The unit can be reset by pushing the hidden button for +/- 2 seconds. Push the hidden button for +/- 6 sec for ZX500.

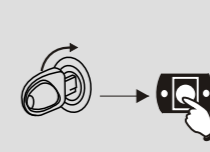
ZX300 ONLY

23) **ONE EVENT OVERRIDE**



To override the immobiliser or alarm, in the event of a flat remote battery. In any mode, turn the Ignition on and press the hidden push button for +/- 2 seconds until the unit chirps once, the system will be reset. This is a once off override.

24) **PERMANENT OVERRIDE**



To put the unit into permanent override. In drive mode, press and hold the hidden button (+/-10sec) until the unit chirps once. The unit is now in permanent override. The dash led will flash continuously. The alarm and immobiliser features will now be dormant. If you try to set the alarm you will hear 8 chirps. Repeat this procedure to exit service mode.

ZX300 & ZX400 ONLY

25) **REMOVE SET/RESET CHIRPS**



Set / reset chirps OFF. In drive mode press the hidden button and turn the ignition off immediately. Continue to press the button until the unit chirps once. The set / reset chirps have now been removed. To turn the set / reset chirps back on repeat the above procedure, the unit will chirp twice.

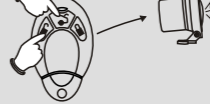
ZX500 ONLY

26) **BOOT RELEASE FUNCTION**



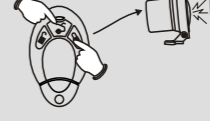
To open the boot. Press the boot release button (ignition off). The boot will open. If the alarm was set the boot will open and the alarm will be reset.

27) **REMOVE SET / RESET CHIRPS**



Set / reset chirps OFF. You can deactivate the set/reset chirps so when you set or reset the alarm there will be no chirps. Just press the unlock and boot release buttons together. The unit will chirp once as confirmation.

28) **ENABLE SET / RESET CHIRPS**



Set / reset chirps ON. You can activate the set/reset chirps so when you set or reset the alarm there will be chirps. Just press the lock and boot release buttons together. The unit will chirp twice as confirmation.