



Alarm and Immobiliser Systems

ZX70Mk3 ZX300Mk2 ZX400Mk2

FITMENT CENTRE STAMP:

SANJI Electronics (Pty) Ltd
39 Kyalami Boulevard, Kyalami
Business Park Midrand 1684,
Gauteng, South Africa

SANJI
ELECTRONICS (PTY) LTD

TEL: +27 11 875 0000

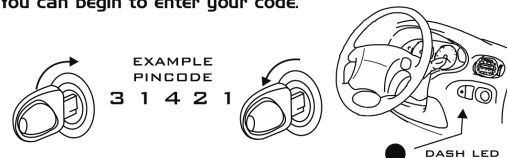
E-mail: sales@sanji.co.za
WEB: www.sanji.co.za

SABS
ISO 9001
ISO 9001:2015
quality company

ICASA
TA-2013/037

26) USING YOUR PINCODE OVERRIDE (ZX400MK2 ONLY)

The ZX400 can be temporarily overridden by entering the supplied 5 digit pincode override by means of turning the ignition switch on and off in a sequence as per instructions below. If the unit is in immobiliser armed mode (dash led solid) you can begin to enter your code. If the alarm is set, open the door and turn the ignition on. Wait for the unit to stop sounding, turn the ignition off. You can begin to enter your code.



Digit 1 [number 3]

Turn ignition key on, led will start to flash, on the **THIRD** flash, turn ignition key off, the indicators will flash once, you have now successfully put your first digit in.

Digit 2 [number 1]

Turn ignition key on, led will start to flash, after the **FIRST** flash, turn ignition key off, the indicators will flash once, you have now successfully put your second digit in.

Digit 3 [number 4]

Turn ignition key on, led will start to flash, after the **FOURTH** flash, turn ignition key off, the indicators will flash once, you have now successfully put your third digit in.

Digit 4 [number 2]

Turn ignition key on, led will start to flash, after the **SECOND** flash, turn ignition key off, the indicators will flash once, you have now successfully put your fourth digit in.

Digit 5 [number 1]

Turn ignition key on, led will start to flash, after the **FIRST** flash, turn ignition key off, the indicators will flash once, you have now successfully put your fifth digit in and have successful overridden your vehicle.

If you enter an incorrect digit the unit will not flash the indicators and will revert back to the first digit. If you enter an incorrect digit 3 times the unit will sound the alarm. Turn the ignition on and wait for the unit to stop sounding. You can now re-enter your code.

27) AUTO RE-ARM (safety against code jammers)

As factory default, the unit will Auto re-arm after 30 seconds if the user has unlocked the vehicle via the remote and not pressed the set button again. The alarm will only Auto re-arm and lock the doors if no doors or ignition has been pulsed.

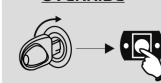
28) AUTO ARM (safety against code jammers)

Once the auto ARM feature has been activated, the alarm will arm up even if a remote jammer is jamming signals in the area. The central locking will only be pulsed if no door or ignition pulse has been detected. If a door or ignition pulse has been detected, the unit will **only** set the alarm but will **not** lock the vehicles doors, i.e. From drive, the alarm will set (30 seconds after the first door pulse) but will **not** lock the doors to prevent the keys being locked inside the vehicle.

The siren will sound for 30 seconds if a door is opened without the alarm being reset via the remote.

ZX300MK2 ONLY

29) ONE EVENT OVERRIDE



To override the immobiliser or alarm, in the event of a flat remote battery.

In any mode, turn the Ignition on and press the hidden push button for +/- 2 seconds until the unit chirps once, the system will be reset. **This is a once off override.**

REQUIRES A 3 BUTTON REMOTE

30) BOOT RELEASE FUNCTION



To open the boot.

Press the boot release button (ignition off). The boot will open. If the alarm was set the boot will open and the alarm will be reset.

REMOTE JAMMING DETECTION DISCLAIMER

Sanji engineers have developed the ZX-JAM-ALERT to warn the user with audible tones, when a possible Remote Jamming signal has been detected within the ZX-JAM-ALERT protection zone.

The ZX-JAM-ALERT will not prevent JAMMING in any way. All care must be taken to ensure that your vehicle has been locked to protect your valuables. Once the ZX-JAM-ALERT has warned you of a possible remote jam, return to the vehicle and ensure that your vehicle has been locked.

USER INSTRUCTIONS

SANJI[®]
ELECTRONICS (PTY) LTD
SECURING YOUR FUTURE



Alarm and Immobiliser Systems
ZX70Mk3 ZX300Mk2 ZX400Mk2

Briefed with the idea of "The Super intelligent Design Concept" Sanji engineers developed the ZX-Mk3 Range of professional vehicle security alarm and immobiliser systems. The ZX-Mk3 range represents the 'state of the art' in vehicle security. Read these instructions for correct system operation. All points marked * are optional features. Refer to the back of the leaflet to find out which product you have.

1) SETTING THE ALARM To enable the immobiliser and full alarm features. Press the lock button, the unit will sound 2 soft chirps and the indicators will flash twice. If fitted with central locking the doors will lock and the sensor will switch on.



2) DOOR / BOOT / BONNET OPEN WARNING To warn the driver that a door or boot is open when setting the alarm. The unit will sound two additional loud chirps and flash the indicators twice if a door is still open when the unit fully arms after 30 seconds. The doors will then be bypassed as the system will assume a faulty door switch.



3) ALARM DELAY PERIOD 30 second arming delay. The dash led will flash rapidly during the 30 second delay period. After the delay, the dash led will start to flash slowly. The alarm and immobiliser is now fully armed.



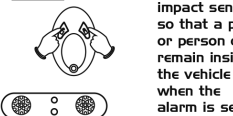
4) ALARM FAST ARM To skip the 25 second delay period. After the alarm has been set press the lock button again. The unit will now go to fully armed and the dash led will flash slowly.



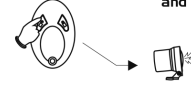
5) ALARM ARMED CONFIRMATION To confirm alarm armed mode. Press the lock button, the indicators will flash once to confirm that the alarm is fully set.



6) SENSOR SHUT DOWN To disable the interior or impact sensor so that a pet or person can remain inside the vehicle when the alarm is set. Press both buttons together when setting the alarm. The siren will sound 4 loud chirps and the indicators will flash twice. The sensor has now been disabled (green LED will turn off). After 25 seconds the system will be fully armed.



7) RESET THE ALARM To reset the immobiliser and alarm. Press the unlock button. The unit will sound 1 soft chirp and the indicators will flash once. If fitted with central locking the doors will unlock.



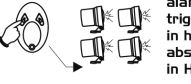
8) SELECTIVE UNLOCK ON ALARM RESET To reset the alarm and open the driver's door only. Press the unlock button. The unit will reset and selectively only open the driver's door. To open the passenger doors press the unlock button again.



9) AUTO ZONE BYPASS Automatically bypass a defective zone. If the unit detects a permanently faulty zone, e.g. door, sensor or ignition during alarm set, the system will sound 3 times then isolate the faulty zone.



10) VIOLATION CHIRPS To indicate to user that the alarm has triggered in his/her absence or is in HJ. When the alarm is reset, the unit will sound 4 loud chirps if the alarm had triggered during the alarm set mode. If the indicators remain ON during the 4 chirps, the alarm is in HJ mode, refer to point 21 to reset HJ



IGNORE POINT II FOR ZX70MK3

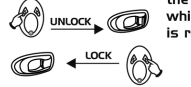
11) STARTING THE VEHICLE To start the vehicle after the alarm has been reset. When the alarm is reset the dash led will be off, the vehicle can be started within 60 seconds. After 60 seconds the immobiliser will be armed, dash led on. Press the unlock button the dash led will turn off, the vehicle can now be started.



12) DOOR LOCK ON START Automatic locking of all doors when ignition is turned on. When the ignition is turned on, if all the doors, boot and bonnet are closed, the doors will lock.



13) DOOR LOCK / UNLOCK IN DRIVE To lock or unlock the doors from the remote while the car is running. Press the unlock button to unlock the doors. Press the lock button to lock the doors.



14) DOOR UNLOCK ON IGNITION OFF To open the doors when the ignition is turned off. Switch the ignition off. All the doors will unlock. If fitted with selective unlock, only the driver's door will open. Press the unlock button to open the passenger doors.



15) REMOTE PANIC To enable the siren to sound and the indicators to flash under emergency conditions. Press either button continuously for +/- 3 seconds. When in panic, the vehicle can be driven. Press the unlock button to reset panic.



16) HI-JACK SERVICE MODE To temporarily disable hi-jack. In drive, (ignition on, dash led off), press the lock and unlock buttons simultaneously, the siren will chirp once. HJ is now disabled. When the ignition is turned on to drive, the unit will flash the indicators once to warn the user that the unit is in HJ service mode. To reactivate HJ repeat the above procedure, the siren will chirp twice.



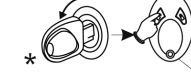
17) FORCED HI-JACK MODE Forced hi-jack in drive. When you start the vehicle, the unit will enter hi-jack, the dash led will give a 1 second pulse. Refer to point 21 to reset hi-jack. If you start the vehicle with the hidden button pressed, the unit will not enter forced hi-jack.



18) DRIVER'S DOOR HI-JACK To activate hi-jack. In drive open then close driver's door. If all doors, bonnet and boot are closed the dash led will give a 1 second pulse. The unit has entered hi-jack phase.



19) HI-JACK OPERATION Hi-jack mode. Countdown period is 90 sec. If ignition is turned off during this time, the timer will stop. When the ignition is turned on again the timer will continue. You can set the alarm in HJ mode. When the alarm is reset, the alarm will sound 4 loud chirps with the indicators ON to indicate HJ mode.



20) HI-JACK WARNING PERIOD Hi-jack warning mode. After the countdown period the unit will enter the 20 second warning period. The unit will chirp and flash the indicators. After this period the unit will enter the 8 second slow down period. At any point in time you can reset hi-jack by pressing the hidden button.



21) RESETTING HI-JACK To reset the unit back to normal drive mode. Press the hidden push button at any time for +/- 2 seconds, the unit will chirp once to confirm that hi-jack has been reset.



22) FINAL HI-JACK To confirm what phase the unit is in. In final hi-jack the siren will sound on and off at 5 second intervals and the indicators will flash. The immobiliser will be armed. The unit can be reset by pushing the hidden button for +/- 1 second.



23) REMOVE SET/RESET CHIRPS Set / reset chirps OFF. In drive mode press the hidden button and turn the ignition off immediately. Continue to press the button until the unit chirps once. The set / reset chirps have now been removed. To turn the set / reset chirps back on repeat the above procedure, the unit will chirp twice.



24) REMOTE JAMMING WARNING SYSTEM Jammer detection can be activated or de-activated at any time. Factory default is ON. In reset mode, turn ignition off and press the LOCK button within 2 seconds. The indicators will flash once, then turn ignition on again within 2 seconds. 1 chirp - Jammer detection ON, 2 chirps - Jammer detection OFF



The system will notify the user of possible jamming after the reset button has been pressed or after ignition has been turned off and door opened. If jamming has been detected, the unit will sound 4 loud chirps with indicator flashes to warn the user that there is a possibility of jamming in the area.



25) REMOTE LOW BATTERY WARNING The remote led will normally be on solid when pressing any button. If the remote batteries are low the led on your remote control will flash. Replace the batteries with: 2 x CR1220 lithium batteries.

