

SANJI[®]

ELECTRONICS (PTY) LTD



CORPORATE PROFILE



PERSONALISED AUTOMOTIVE SECURITY



▶ Vision Statement ◀

Sanji will be the most successful South African supplier of quality electronic products, designed specifically for motor vehicle protection, by any measure.

▶ Mission Statement ◀

Sanji provides innovative products to meet the vehicle protection requirements of the motor industry and the public at large.

Company Overview

Our history

Established in 1986, Sanji Electronics (Pty) Ltd has been designing and manufacturing state-of-the-art Vehicle Security Systems for over 35 years. Sanji is internationally recognised for an innovative range of vehicle security products and car accessories. We are a member of the Gerber Goldschmidt Group which was established in 1920 and now comprises 26 South African divisions and associates and 6 international associates.

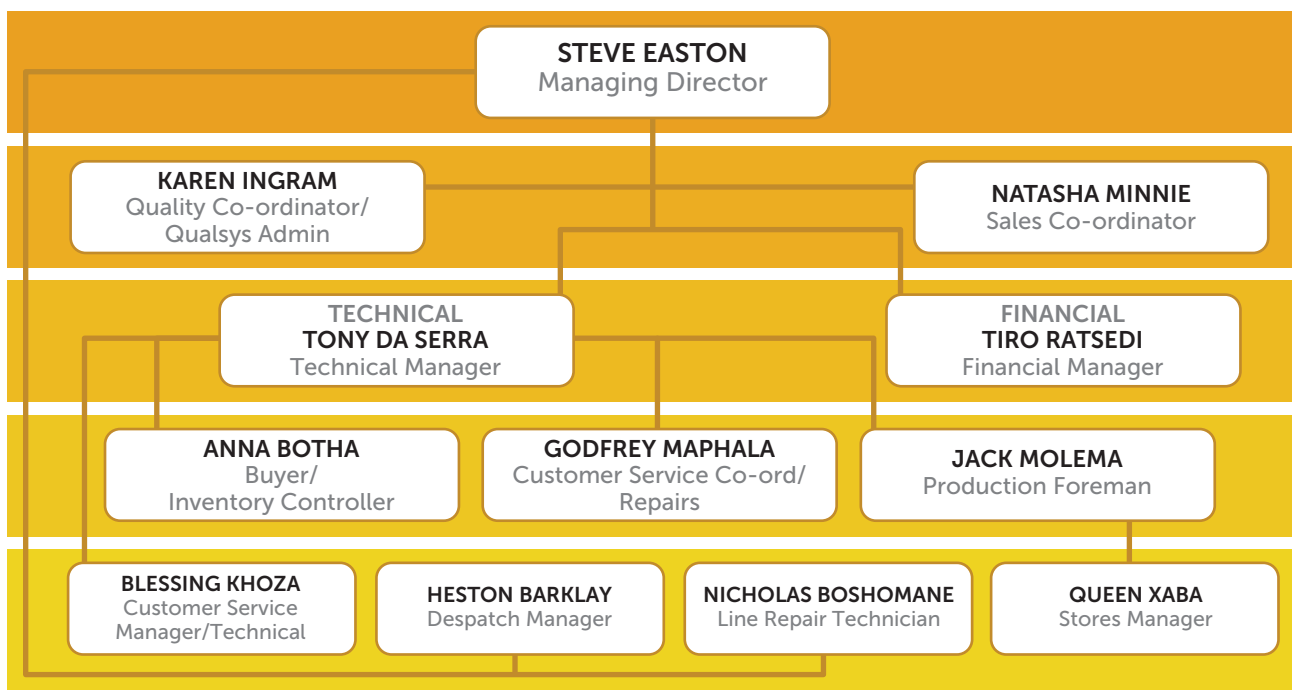
TÜV and B-BBEE status

As a TÜV accredited ISO 9001: 2015 manufacturer our Quality Management System is very well controlled and covers all aspects of the business including design, manufacture, finance and customer support. Sanji Electronics is a B-BBEE Level 3 Contributor with a strong social responsibility to its staff and actively contributes to training and education for all staff members.

Sanji electronics products

Intelligence is a matter of thinking and Sanji Electronics do this exceptionally well - designing the best vehicle protection systems for each situation to out-think criminals. In the area of hi-tech security, the stylish, ergonomically designed remote control is a design masterpiece all on its own. Sanji has utilised high-end, ultramodern materials to transform what used to be a dull black box-remote into this revolutionary combination of design aesthetics and crafted functionality for the user. you can always leave the thinking to Sanji.

Structure



Special Achievements

- ▶ SABS Design Institute Award
- ▶ Sole Hyundai alarm supplier since 1994
- ▶ Awarded Altech Netstar contract 1999
- ▶ Patent granted on vehicle ultrasonic sensor
- ▶ Awarded Isuzu SA contract 2020
- ▶ IQB Certified



Suppliers

- ▶ Avnet
- ▶ Arrow
- ▶ Farnell
- ▶ EBV
- ▶ Sizanani Plastics
- ▶ Digikey
- ▶ Electrocomp
- ▶ Hi-Q
- ▶ Mouser

Tooling

Sanji designs, owns and maintains all of our own injection mold tooling locally. All our equipment is calibrated externally by SANAS.

Staff Compliment

We have a Technical Sales, Internal Sales and Managers in Gauteng (Head Office), Kwazulu-Natal and Western Cape.

Our Clients

200+ fitment centres nationwide and in surrounding states within Africa.



HYUNDAI

ISUZU



RENAULT



**MITSUBISHI
MOTORS**

NETSTAR

A SUBSIDIARY OF ALTRON



mazda

Facilities

Head Office in Kyalami, Johannesburg with design, production and warehousing facilities. Sanji Electronics (Pty) Ltd has branches in both Cape Town and Durban.



Production & Testing

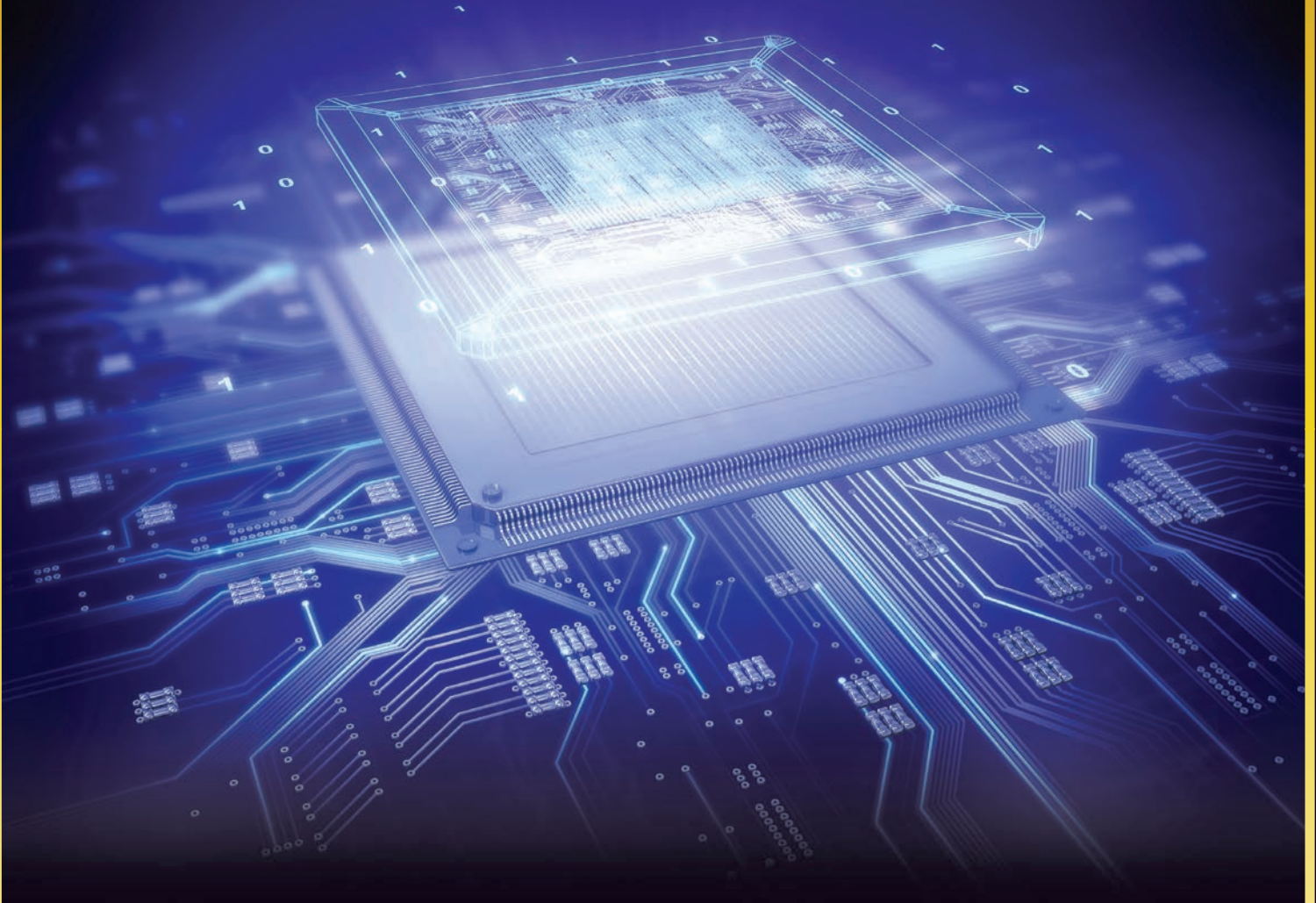


Warehousing



SANJI[®]

ELECTRONICS (PTY) LTD



JOHANNESBURG

Sanji Electronics (Pty) Ltd
39 Kyalami Boulevard
Kyalami Business Park
Midrand, Gauteng, South Africa
Tel: +27 (0)11 875-0000
Email: stevee@sanji.co.za

CAPE TOWN

Sanji Electronics (Pty) Ltd
Unit 6, Constantiaberg
Business Park, Diep River
Cape Town, South Africa
Tel: +27 (0)21 706-1000/1010
Email: rudib@sanji.co.za

DURBAN

Sanji Electronics (Pty) Ltd
6 Swapo Road
Durban North
Durban, South Africa
Tel: +27 (0)31 564-7202/1293
Email: ashb@sanji.co.za

www.sanji.co.za

