

BRIEFED WITH THE IDEA OF THE "THE INTELLIGENT DESIGN CONCEPT" SANJI ENGINEERS DEVELOPED THE YX RANGE OF SUPER INTELLIGENT VEHICLE SECURITY ALARM, IMMOBILISER AND COMFORT CONTROL SYSTEMS. THE YX RANGE REPRESENTS THE 'STATE OF THE ART' IN VEHICLE SECURITY. SANJI HAVE INCORPORATED THE MOST UP TO DATE TECHNOLOGY TO IMPROVE PERFORMANCE AND LONG TERM RELIABILITY. READ THESE INSTRUCTIONS FOR CORRECT SYSTEM OPERATION. ALL POINTS MARKED * ARE OPTIONAL FEATURES.

1) SETTING THE ALARM

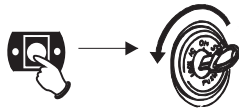


TO ENABLE THE IMMOBILISER AND FULL ALARM FEATURES.

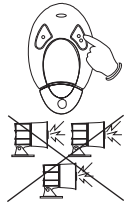


PRESS THE DOUBLE DOT BUTTON. THE UNIT WILL SOUND 3 SOFT CHIRPS AND THE INDICATORS WILL FLASH TWICE. IF FITTED WITH CENTRAL LOCKING THE DOORS WILL LOCK AND THE SENSOR WILL SWITCH ON.

2) SETTING THE ALARM WITH NO CHIRPS



NO SET CHIRPS.



IN DRIVE, TURN THE IGNITION OFF WITH THE HIDDEN BUTTON PRESSED, THE INDICATORS WILL FLASH ONCE. WHEN THE ALARM IS SET, THERE WILL BE NO CHIRPS. WHEN THE ALARM IS RESET, THIS FUNCTION IS CLEARED, SET CHIRPS WILL BE ACTIVE AGAIN.

3) DOOR / BOOT / BONNET OPEN WARNING



TO WARN THE DRIVER THAT A DOOR OR BOOT IS OPEN WHEN SETTING THE ALARM.

THE UNIT WILL SOUND TWO ADDITIONAL LOUD CHIRPS AND FLASH THE INDICATORS TWICE WHEN SETTING THE ALARM. IF A DOOR IS STILL OPEN WHEN THE UNIT FULLY ARMS, THE DOORS WILL BE BYPASSED. THE SYSTEM WILL ASSUME A FAULTY DOOR SWITCH.

4) ALARM DELAY PERIOD



30 SECOND ARMING DELAY.

THE DASH LED WILL FLASH RAPIDLY DURING THE 30 SECOND DELAY PERIOD. AFTER THE 30 SECOND DELAY, THE DASH LED WILL START TO FLASH SLOWLY. THE ALARM AND IMMOBILISER IS NOW FULLY ARMED.

5) ALARM FAST ARM



TO SKIP THE 30 SECOND DELAY PERIOD.



AFTER THE ALARM HAS BEEN SET PRESS THE DOUBLE DOT BUTTON AGAIN. THE UNIT WILL NOW GO TO FULLY ARMED AND THE DASH LED WILL FLASH SLOWLY.

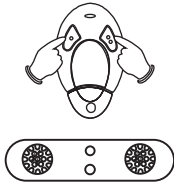
6) ALARM ARMED CONFIRMATION

TO CONFIRM ALARM ARMED MODE.

PRESS THE DOUBLE DOT BUTTON, THE INDICATORS WILL FLASH ONCE TO CONFIRM THAT THE ALARM IS FULLY SET.



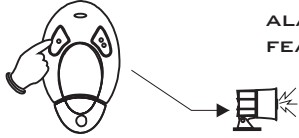
7) SENSOR SHUT DOWN



TO DISABLE THE INTERIOR SENSOR SO THAT A PET OR PERSON CAN REMAIN INSIDE THE VEHICLE WHEN THE ALARM IS SET.

PRESS BOTH BUTTONS TOGETHER WHEN SETTING THE ALARM. THE SIREN WILL SOUND 4 LOUD CHIRPS AND THE INDICATORS WILL FLASH TWICE. THE SENSOR HAS NOW BEEN DISABLED. AFTER 30 SECONDS THE SYSTEM WILL BE FULLY ARMED.

8) RESETTING THE ALARM



TO RESET THE IMMOBILISER AND FULL ALARM FEATURES.

PRESS THE SINGLE DOT BUTTON. THE UNIT WILL SOUND 1 SOFT CHIRP AND THE INDICATORS WILL FLASH ONCE. IF FITTED WITH CENTRAL LOCKING THE DOORS WILL UNLOCK.

9) SELECTIVE UNLOCK ON ALARM RESET



TO RESET THE ALARM AND OPEN THE DRIVER'S DOOR ONLY.

PRESS THE SINGLE DOT BUTTON. THE UNIT WILL RESET AND SELECTIVELY ONLY OPEN THE DRIVER'S DOOR. TO OPEN THE PASSENGER DOORS PRESS THE SINGLE DOT BUTTON AGAIN.

10) AUTO RE-ARM



UNIT WILL AUTOMATICALLY SET THE ALARM.

WHEN THE ALARM IS RESET IF NO DOORS ARE OPENED AFTER 60 SECONDS, THE UNIT WILL SET THE ALARM AUTOMATICALLY.

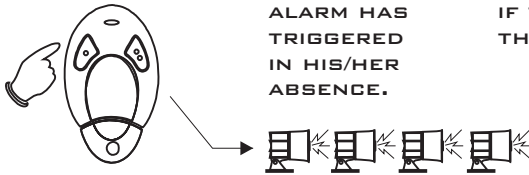
11) AUTO ZONE BYPASS



AUTO-MATICALLY BYPASS A DEFECTIVE ZONE.

IF THE UNIT DETECTS A PERMANENTLY FAULTY ZONE, E.G. DOOR OR SENSOR DURING ALARM SET, THE SYSTEM WILL SOUND 3 TIMES THEN ISOLATE THE FAULTY ZONE.

12) VIOLATION CHIRPS



TO INDICATE TO USER THAT THE ALARM HAS TRIGGERED IN HIS/HER ABSENCE.

WHEN THE ALARM IS RESET, THE UNIT WILL SOUND 4 LOUD CHIRPS IF THE ALARM TRIGGERED DURING THE ALARM SET MODE.

13) STARTING THE VEHICLE



TO START THE VEHICLE AFTER THE ALARM HAS BEEN RESET.

WHEN THE ALARM IS RESET THE DASH LED WILL BE OFF, THE VEHICLE CAN BE STARTED WITHIN 60 SECONDS. AFTER 60 SECONDS THE IMMOBILISER WILL BE ARMED, DASH LED ON.

IGNOR POINTS 13 & 14 FOR THE YX2000

14) STARTING WHEN THE IMMOBILISER IS ARMED



TO DEACTIVATE THE IMMOBILISER.

IF THE DASH LED IS ON SOLID, PRESS THE SINGLE DOT BUTTON THE LED WILL TURN OFF. THE VEHICLE CAN NOW BE STARTED. IF THE IGNITION IS OFF FOR 60 SECONDS THE IMMOBILISER WILL AUTO ARM (DASH LED ON).

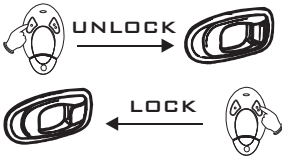
15) DOOR LOCK ON START



AUTOMATIC LOCKING OF ALL DOORS WHEN IGNITION TURNED ON.

WHEN THE IGNITION IS TURNED ON TO DRIVE, IF ALL THE DOORS, BOOT AND BONNET ARE CLOSED, THE DOORS WILL LOCK AFTER 10 SECONDS.

16) DOOR LOCK / UNLOCK IN DRIVE



TO LOCK OR UNLOCK THE DOORS FROM THE REMOTE WHILE THE CAR IS RUNNING.

PRESS THE SINGLE DOT BUTTON TO UNLOCK THE DOORS. PRESS THE DOUBLE DOT BUTTON TO LOCK THE DOORS.

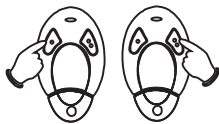
17) DOOR UNLOCK ON IGNITION OFF



TO OPEN THE DOORS WHEN THE IGNITION IS TURNED OFF.

SWITCH THE IGNITION OFF. ALL THE DOORS WILL UNLOCK. IF FITTED WITH SELECTIVE UNLOCK, ONLY THE DRIVER'S DOOR WILL OPEN. PRESS THE SINGLE DOT BUTTON TO OPEN THE PASSENGER DOORS.

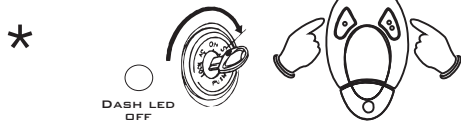
18) REMOTE PANIC



TO ENABLE THE SIREN TO SOUND AND THE INDICATORS TO FLASH UNDER EMERGENCY CONDITIONS.

PRESS EITHER BUTTON CONTINUOUSLY FOR +/- 3 SECONDS. WHEN IN PANIC, THE UNIT CAN BE DRIVEN. PRESS THE SINGLE DOT BUTTON TO RESET PANIC.

19) HI-JACK SERVICE MODE



TO TEMPORARILY DISABLE HI-JACK.

IN DRIVE, (IGNITION ON, DASH LED OFF), PRESS BOTH BUTTONS SIMULTANEOUSLY, THE SIREN WILL CHIRP ONCE. HI-JACK IS NOW DISABLED. TO REACTIVATE HI-JACK REPEAT THE ABOVE PROCEDURE, THE SIREN WILL CHIRP TWICE.

20) OPERATION IN HI-JACK SERVICE MODE



TO SHOW THE USER THAT THE UNIT IS IN HI-JACK SERVICE MODE.

WHEN THE IGNITION IS TURNED ON TO DRIVE, THE UNIT WILL FLASH THE INDICATORS ONCE TO WARN THE USER THAT THE UNIT IS IN HI-JACK SERVICE MODE.

21) FORCED HI-JACK MODE



FORCED HI-JACK IN DRIVE.

WHEN YOU START THE VEHICLE, THE DASH LED WILL GIVE A 1 SECOND PULSE. REFER TO POINT 25 TO RESET HI-JACK. IF YOU START THE VEHICLE WITH THE HIDDEN BUTTON PRESSED, THE UNIT WILL NOT ENTER FORCED HI-JACK. LOCK ON START WILL NOT OCCUR UNTIL FORCED HI-JACK IS RESET.

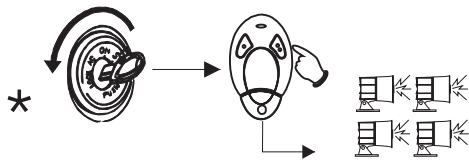
22) DRIVER'S DOOR HI-JACK



TO ACTIVATE HI-JACK.

IN DRIVE OPEN THEN CLOSE DRIVER'S DOOR. IF ALL DOORS, BONNET AND BOOT ARE CLOSED THE DASH LED WILL GIVE A 1 SECOND PULSE. THE UNIT HAS ENTERED HI-JACK.

23) HI-JACK OPERATION



HI-JACK MODE.

COUNTDOWN PERIOD IS 90 SEC. IF IGNITION IS TURNED OFF DURING THIS TIME, THE TIMER WILL STOP. WHEN THE IGNITION IS TURNED ON AGAIN THE TIMER WILL CONTINUE. IF YOU TRY TO SET THE ALARM DURING THE COUNTDOWN PERIOD, THE UNIT WILL SOUND 4 LOUD CHIRPS TO WARN YOU.

24) HI-JACK WARNING PERIOD



HI-JACK MODE.

AFTER THE COUNTDOWN PERIOD THE UNIT WILL ENTER THE 10 SECOND WARNING PERIOD, THE UNIT WILL CHIRP. AFTER THIS PERIOD THE UNIT WILL ENTER THE 8 SECOND SLOW DOWN PERIOD. AT ANY POINT IN TIME YOU CAN RESET HI-JACK BY PRESSING THE HIDDEN BUTTON.

25) RESETTING HI-JACK



TO RESET THE UNIT BACK TO NORMAL DRIVE MODE.

PRESS THE HIDDEN PUSH BUTTON AT ANY TIME FOR +/- 3 SECONDS, THE UNIT WILL CHIRP ONCE TO CONFIRM THAT HI-JACK HAS BEEN CANCELLED.

26) FINAL HI-JACK



TO CONFIRM WHAT PHASE THE UNIT IS IN.

IN FINAL HI-JACK THE SIREN WILL SOUND ON AND OFF AT 5 SECOND INTERVALS AND THE INDICATORS WILL FLASH. THE IMMOBILISER WILL BE ARMED. THE UNIT CAN BE RESET BY PUSHING THE HIDDEN BUTTON FOR +/- 3 SECONDS.

27) OVERRIDING THE ALARM AND IMMOBILISER



TO RESET THE ALARM OR IMMOBILISER IN THE EVENT OF A FLAT REMOTE BATTERY.

INSERT THE TOUCH KEY INTO THE TOUCH HEAD RECEPTACLE. THE UNIT WILL CHIRP AND RESET. THE DASH LED WILL TURN OFF. THIS IS A ONE TIME OVERRIDE FACILITY.

YX1000 ONLY WITH OPTIONAL TOUCH KEY!

YX100 AND YX2000 ONLY!

28) ONE EVENT OVERRIDE



TO OVERRIDE THE IMMOBILISER OR ALARM, IN THE EVENT OF A FLAT REMOTE BATTERY.

TURN THE IGNITION ON AND PRESS THE HIDDEN PUSH BUTTON FOR +/- 3 SECONDS, IN ANY MODE, THE SYSTEM WILL BE RESET. THIS IS A ONCE OFF OVERRIDE.

29) PERMANENT OVERRIDE



TO PUT THE UNIT INTO PERMANENT OVERRIDE.

IN DRIVE MODE, PRESS AND HOLD THE HIDDEN BUTTON (+/- 10sec) UNTIL THE UNIT CHIRPS ONCE. THE UNIT IS NOW IN PERMANENT OVERRIDE. THE ALARM AND IMMOBILISER FEATURES WILL NOW BE DORMANT. IF YOU TRY TO SET THE ALARM YOU WILL HEAR 8 CHIRPS. REPEAT THIS PROCEDURE TO EXIT SERVICE MODE.

YX1000 ONLY!

30) READING OUT THE PINCODE

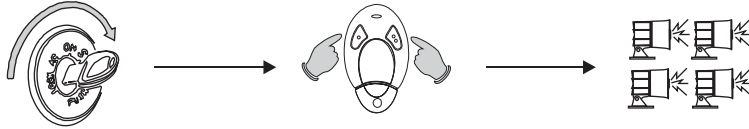
WHEN THE VEHICLE IS STARTED, IF YOU HEAR A CHIRP, THAT MEANS YOUR PINCODE HAS NOT BEEN READ OUT. PLEASE FOLLOW THE PROCEDURE BELOW TO READ OUT YOUR PERSONALISED PINCODE. YOU MUST READ OUT THE PINCODE **TWICE** IN ORDER TO GET RID OF THIS CHIRP. IF THERE IS NO CHIRP WHEN THE VEHICLE IS STARTED, IGNORE THE PROCEDURE BELOW.

EXAMPLE PINCODE
3 1 4 2 1

IN THE IMMOBILISER ARMED MODE (DASH LED ON), TURN IGNITION ON.

PRESS BOTH BUTTONS SIMULTANEOUSLY.

4 CHIRPS



DIGIT 1 {3} DASH LED WILL FLASH THREE TIMES, THE INDICATORS WILL FLASH ONCE.

DIGIT 2 {1} DASH LED WILL FLASH ONCE, THE INDICATORS WILL FLASH ONCE.

DIGIT 3 {4} DASH LED WILL FLASH FOUR TIMES, THE INDICATORS WILL FLASH ONCE.

DIGIT 4 {2} DASH LED WILL FLASH TWICE, THE INDICATORS WILL FLASH ONCE.

DIGIT 5 {1} DASH LED WILL FLASH ONCE, THE INDICATORS WILL FLASH ONCE. THE UNIT WILL CHIRP 4 TIMES.

31) USING YOUR PINCODE OVERRIDE

IF THE UNIT IS IN IMMOBILISER ARMED MODE (DASH LED SOLID) YOU CAN BEGIN TO ENTER YOUR CODE. IF THE ALARM IS SET, OPEN THE DOOR AND TURN THE IGNITION ON. WAIT FOR THE UNIT TO STOP SOUNDING, TURN THE IGNITION OFF. YOU CAN BEGIN TO ENTER YOUR CODE.

**EXAMPLE PINCODE
3 1 4 2 1**

DIGIT 1 {3}

TURN IGNITION KEY ON, LED WILL START TO FLASH, ON THE THIRD FLASH, TURN IGNITION KEY OFF, THE INDICATORS WILL FLASH ONCE, YOU HAVE NOW SUCCESSFULLY PUT YOUR FIRST DIGIT IN.

DIGIT 2 {1}

TURN IGNITION KEY ON, LED WILL START TO FLASH, AFTER THE FIRST FLASH, TURN IGNITION KEY OFF, THE INDICATORS WILL FLASH ONCE, YOU HAVE NOW SUCCESSFULLY PUT YOUR SECOND DIGIT IN.

DIGIT 3 {4}

TURN IGNITION KEY ON, LED WILL START TO FLASH, AFTER THE FOURTH FLASH, TURN IGNITION KEY OFF, THE INDICATORS WILL FLASH ONCE, YOU HAVE NOW SUCCESSFULLY PUT YOUR THIRD DIGIT IN.

DIGIT 4 {2}

TURN IGNITION KEY ON, LED WILL START TO FLASH, AFTER THE SECOND FLASH, TURN IGNITION KEY OFF, THE INDICATORS WILL FLASH ONCE, YOU HAVE NOW SUCCESSFULLY PUT YOUR FOURTH DIGIT IN.

DIGIT 5 {1}

TURN IGNITION KEY ON, LED WILL START TO FLASH, AFTER THE FIRST FLASH, TURN IGNITION KEY OFF, THE INDICATORS WILL FLASH ONCE, YOU HAVE NOW SUCCESSFULLY PUT YOUR FIFTH DIGIT IN AND HAVE SUCCESSFUL OVERRIDDEN YOUR VEHICLE.

IF YOU ENTER AN INCORRECT DIGIT THE UNIT WILL NOT FLASH THE INDICATORS AND WILL REVERT BACK TO THE FIRST DIGIT. IF YOU ENTER AN INCORRECT DIGIT 3 TIMES THE UNIT WILL SOUND THE ALARM AND YOU WILL HAVE TO WAIT FOR 3 ALARM CYCLES UNTIL YOU CAN RE ENTER YOUR CODE.